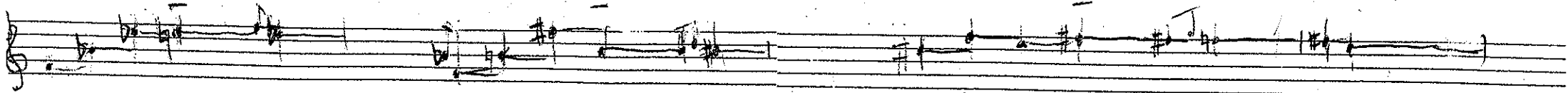
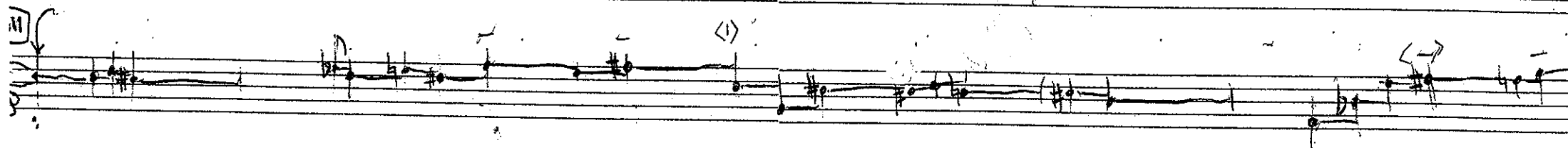
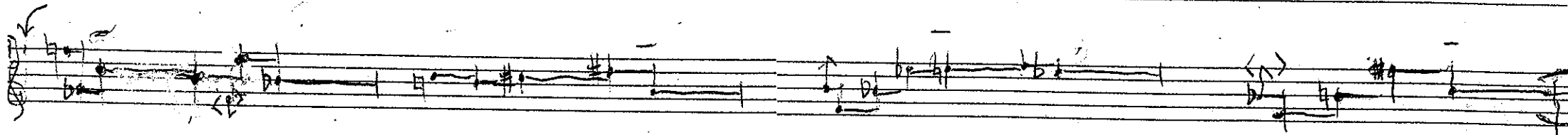


til Michala 2010

-1-



- = t.p. ng dopunkt



til Michala 2010

- 2 -

IV

V

VI

les

Handwritten musical notation on a single staff, starting with a treble clef and a common time signature 'C'. The notation includes various notes, rests, and accidentals (sharps and flats).

Handwritten musical notation on a single staff, starting with a treble clef. The notation includes notes, rests, and accidentals, with some annotations like '<->' and a downward arrow.

Handwritten musical notation on a single staff, starting with a treble clef. The notation includes notes and rests, ending with the word 'fine' and the time signature '25/12'.